

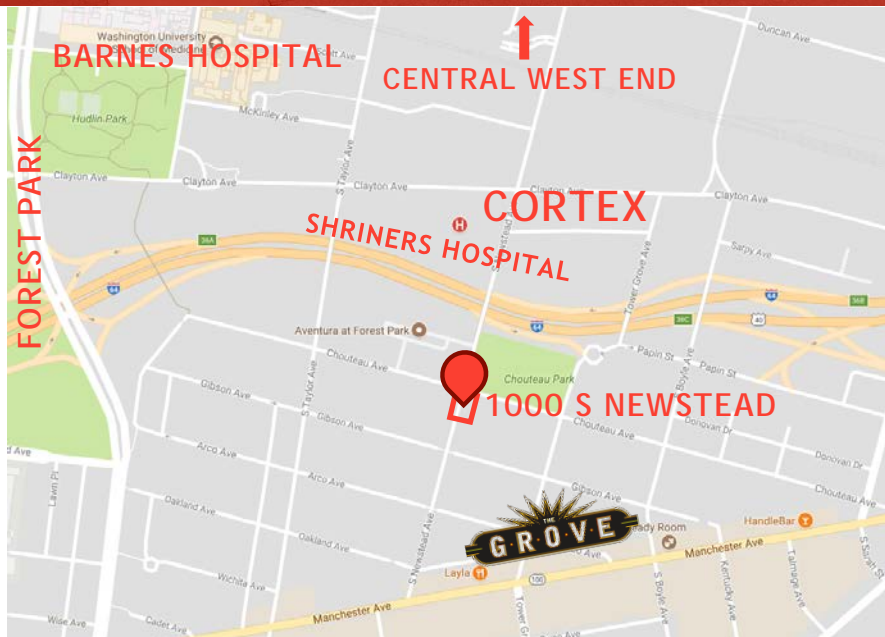
FOR LEASE | 1000 S NEWSTEAD AVE | ST. LOUIS, MO 63110



OFFICE / RETAIL / RESTAURANT SPACE
IN THE GROVE & CORTEX SOUTH

\$16-20/SF NNN
1,180 - 4,600 SF AVAILABLE

- 1,180 - 4,600 SF Available (including lower level)
- Available Early 2018
- Historic renovation
- PRIME location in the Grove & next to CORTEX, Hospitals, and CWE
- Some rear parking available & ample street parking, public parking across street
- \$16-20/SF NNN - Net charges of approximately \$2/SF. LL rate of \$12-14/SF
- Act quickly to implement your buildout requirements during construction
- Floor plans on following page



1000 S NEWSTEAD AVE | ST. LOUIS, MO 63110
WWW.SALIENTREALTYGROUP.COM

GAREN LAFSER

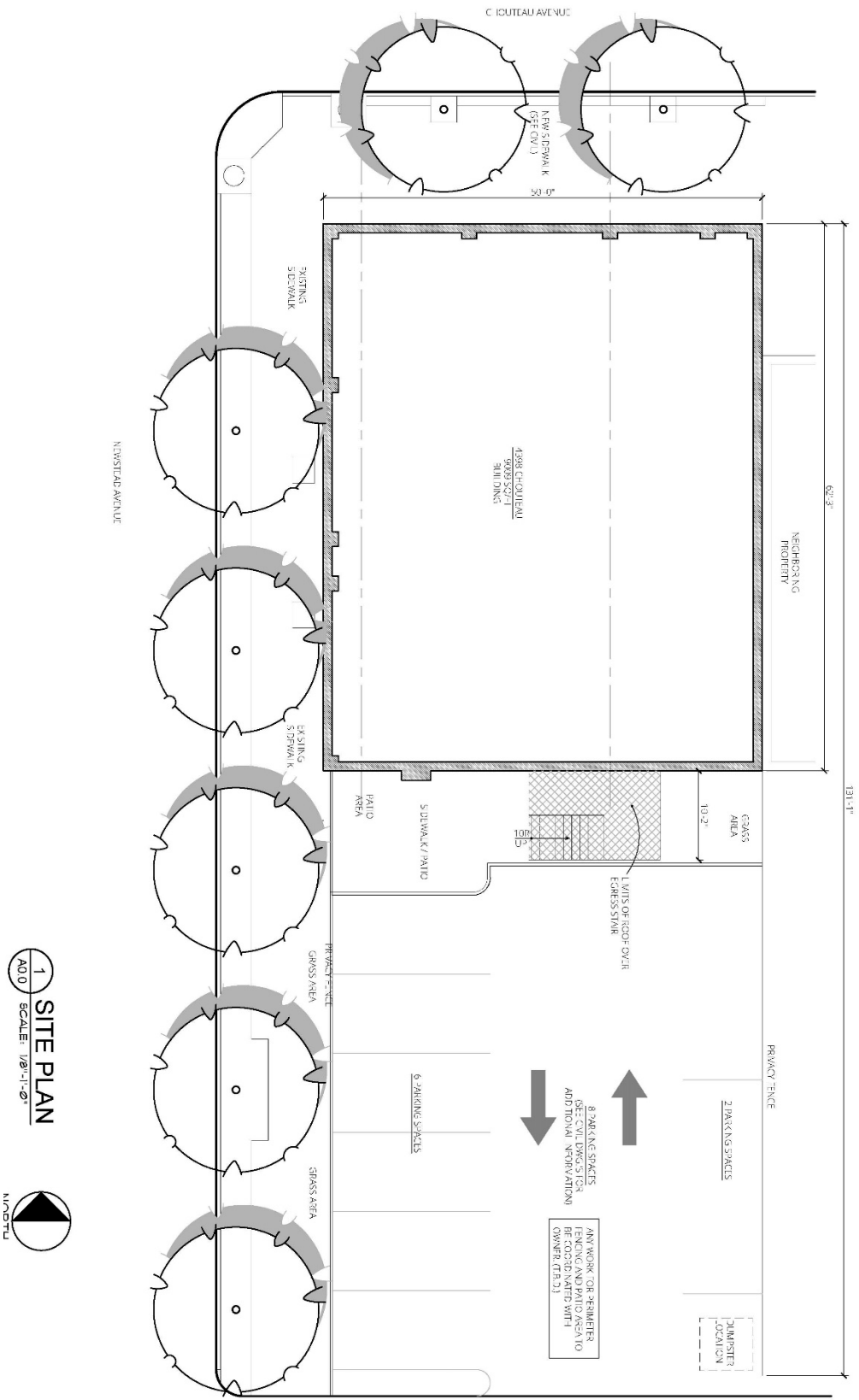
314.374.3687

GLAFSER@SALIENTREALTYGROUP.COM

PRESIDENT, DESIGNATED BROKER

No expressed or implied warranty or representation is made as to the accuracy of the information contained herein. This property is submitted subject to errors, omissions, change of price, withdrawal without notice, prior lease or sale and any other listing conditions imposed by the principals.

FOR LEASE | 1000 S NEWSTEAD AVE | ST. LOUIS, MO 63110



1 SITE PLAN
A0.0 SCALE: 1/8"=1'-0"
N/0°00'

SALIENT
REALTY GROUP
1000 S NEWSTEAD AVE | ST. LOUIS, MO 63110
WWW.SALIENTREALTYGROUP.COM

GAREN LAFSER
314.374.3687
GLAFSER@SALIENTREALTYGROUP.COM
PRESIDENT, DESIGNATED BROKER

No expressed or implied warranty or representation is made as to the accuracy of the information contained herein. This property is submitted subject to errors, omissions, change of price, withdrawal without notice, prior lease or sale and any other listing conditions imposed by the principals.



